

# D-M-E Standard S Ejector Sleeves

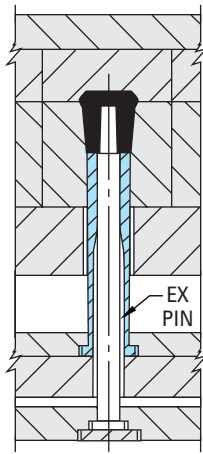
**INCH**  
DIMENSIONS

## Ejector sleeve applications

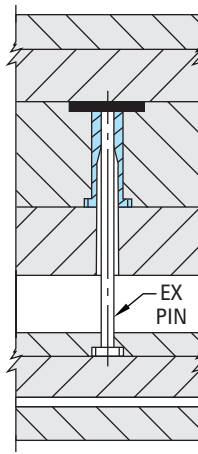
Figure A shows a typical Ejector Sleeve application for plastics molding or die casting where the sleeve is used to eject the piece part.

Figure B shows an application where the sleeve serves as a bushing for the ejector pin. This allows replacement without machining if wear occurs. This practice is also desirable where the ejector pin is located between cavity inserts. Using a sleeve as a bushing provides a full bearing diameter for the pin.

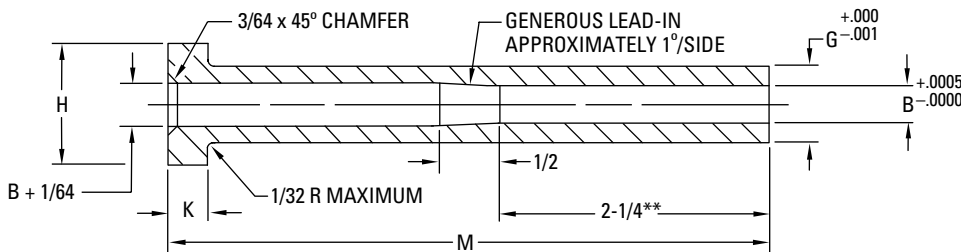
**Fig. A**



**Fig. B**



**Note generous lead-in  
for interference-free entry.**



- Precision made of superior quality thermal shock resisting hotwork die steel
- Hot-forged heads provide uniform grain flow, higher tensile strength
- Outside diameter nitrided to 65-74 HRc hardness and finished to minimize wear
- Centerless ground and polished outer diameter
- Inside bearing diameter is 30-35 HRc hardness and finished honed
- Lead-in taper designed to allow interference-free entry of the ejector pin into the sleeve

### \* To create Item Numbers for S Ejector Sleeves:

- Combine Item Prefix with the letter "M" and the length (M dimension) desired. (e.g. S29M6, S25M10)

ITEM PREFIX*	B I.D.	G O.D.	H HEAD DIA	K HEAD THICK	M-3	M-4	M-5	M-6	M-7	M-8	M-9	M-10	M-11	M-12	M-14
**S13	3/32 (.093)	3/16 (.187)	3/8	3/16											
**S15	1/8 (.125)	7/32 (.218)	13/32	3/16											
S17	5/32 (.156)	1/4 (.250)	7/16	3/16											
S21	3/16 (.187)	5/16 (.312)	1/2	1/4											
S23	7/32 (.218)	11/32 (.343)	9/16	1/4											
S25	1/4 (.250)	3/8 (.375)	5/8	1/4											
S29	5/16 (.312)	7/16 (.437)	11/16	1/4											
S33	3/8 (.375)	1/2 (.500)	3/4	1/4											
S37	7/16 (.437)	5/8 (.625)	7/8	1/4											
S39	1/2 (.500)	11/16 (.687)	15/16	1/4											
S41	9/16 (.562)	3/4 (.750)	1	1/4											
S45	5/8 (.625)	7/8 (.875)	1-1/8	1/4											
S47	3/4 (.750)	1 (1.000)	1-1/4	1/4											

\*\*S13 and S15 have a 1-3/4 bearing length.